

Instructions for the user / dealer

This checklist is compiled with care and aims that the Benomic Star pipe rail trolley can be produced to customer requirements. If something is not clear, please contact Steenks Service.

The user / dealer is responsible for problems that may arise due to incomplete / incorrect completing this checklist and the costs arising there from.

General information

Grower	:	Crop	:	
Contact person	:	Dealer	:	
Address	:	Contact person	:	
City/Country	:	Date	:	
Phone	:	Order number*	:	(*For manufacturer)

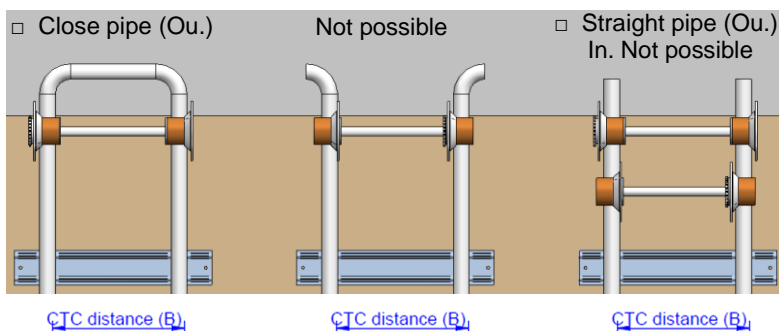
Special general

Pipe rail system

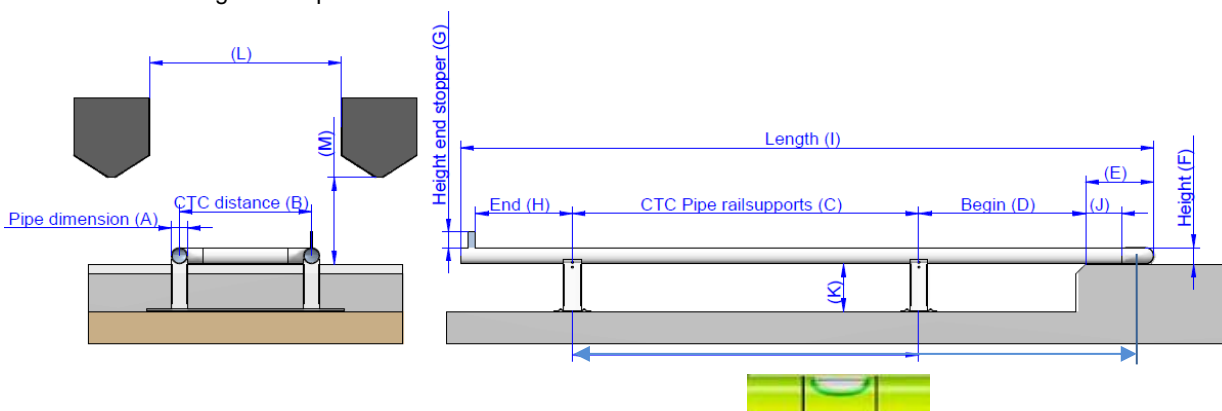
Mark

Pipe rail system:

Ou. = Outer flange
In. = Inner flange **not possible!**



Note: - Inner flange is **not** possible with the Benomic Star



- Pipe dimensions (A) : Ø 45mm / 51mm.
- Center to center size pipe rail system (B) : cm.
- Pipe rail support distance (C) : cm. (max. 125 cm.)
- 1° pipe rail support to pathway (D) : cm. (max. 100 cm.)
- Pipe rail distance on pathway (E) (incl. bend) : cm.
- Is the pipe rail fixed onto the pathway? Yes / No (If yes take photo's)
- Height from concrete path up to top of the pipe (F) : mm.
- Height end stopper (G) : mm. (min. 50mm.)
- Pipe rail distance last support to end pipe rail (H) : cm. (max. 20cm.)
- Length pipe rail path (I) : m.
- Pipe rail distance on pathway (J) (excl. bend) : cm. (min. 5 cm.)
- Height pipe rail support (K) : cm.
- Width harvest path (L) between Crop or Climate system : cm.
- Height Crop or Climate system (M) : cm.

The rollers from the Benomic Star are standard carried out with a steel surface for the pipe rail and a steel flange for the main path.

Note: The Benomic Star is designed for a pipe rail system with a maximum slope of 2°. Moreover, the pipe (at least to 2nd support) must be level with respect to the concrete path for moving along the pipe.

Drive mechanism

The drive rollers are carried out as standard with a steel tread for running on the pipes, and a steel flange for running on the concrete path. The rear rollers are made of plastic (including the flange).

If more grip and comfort on the tubes is desired, the following option is possible:

- Drive roller with a PU tread. (for running on the pipes)

If better protection of the concrete is desired, the following option is possible:

- Drive roller flanges with a (wider) PU tread. (for running on the main path)

Lifting system

It is possible to choose from the following lifting systems (hydraulically operated) for moving the Benomic Star at the concrete path.

- 2x swivelling wheels and 2x fixed wheels* (sideways movement, manoeuvrable)
- 2x swivelling wheels and 2x fixed wheels (lengthways movement, manoeuvrable)

* Standard

Structure

The Benomic Star is standard carried out with a round foot pedal.

Scissor type:

- 2-scissor to 3 metres (250 kg) quantity:

Options

Art.nr.

- | | | |
|--|---------------------|--------------|
| <input type="checkbox"/> Separate battery charger 230V-11A | quantity: | 3015.00.0010 |
| <input type="checkbox"/> Separate battery charger 115V-8A | quantity: | 3015.00.0007 |
| <input type="checkbox"/> Built-in battery charger 230V-11A | | 5197.00.0015 |
| <input type="checkbox"/> Built-in battery charger 115V-8A | | |
| <input type="checkbox"/> Extra charger cable for built-in battery charger | quantity: | 5197.00.0001 |
| <input type="checkbox"/> Tray under the control console | | 5197.00.0028 |
| <input type="checkbox"/> Extra lifting system operation buttons under the platform at the back side** | | 5197.00.0029 |
| <input type="checkbox"/> Multiple centre to centre dimensions by steering bearings (always in consultation with the manufacturer regarding to limitations) | | |
| <input type="checkbox"/> 24 volt connection on the control consol*** | | |
| <input type="checkbox"/> 12 volt connection on the control consol*** | | |
| <input type="checkbox"/> Facility to connect a decontamination container to the control consol*** | | |
| <input type="checkbox"/> Trailer platform fitted to platform with round foot switch*** (= <u>only</u> for gas function) | | |

** The rear is where the main controls are located at the chassis

*** Please contact the manufacturer before connecting several options to the power connection at the same time.